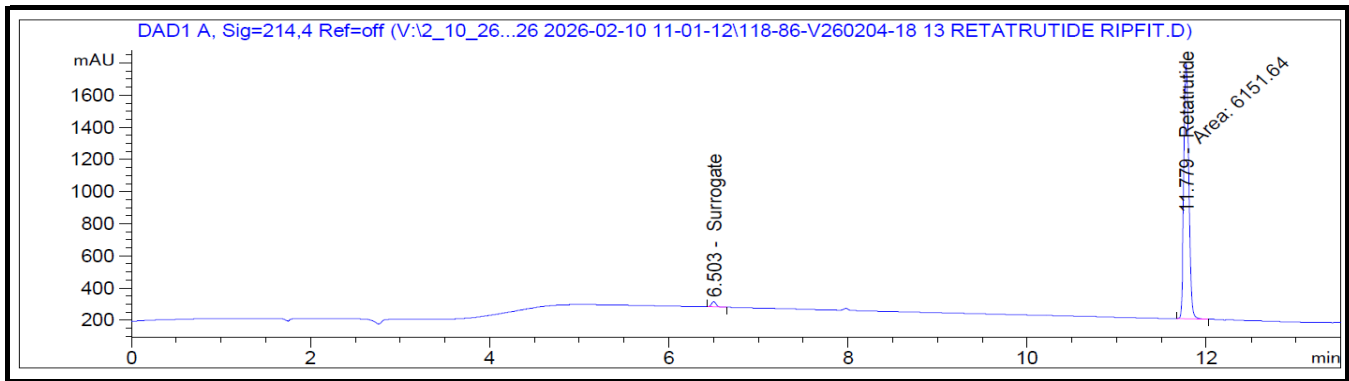


# Certificate of Analysis

Retatrutide 30 mg

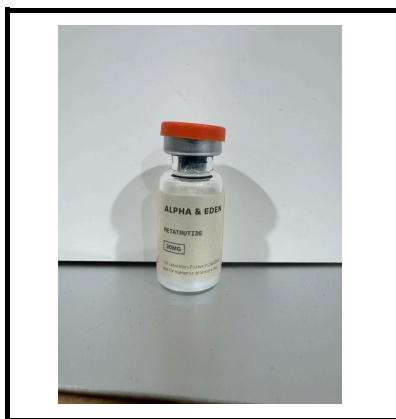
Report To:  
**Alpha & Eden**

Compound: Retatrutide  
Quantity: 30 mg  
Laboratory ID: V260204-18 013  
Lot Number: R26C978  
Date Reported: 5/19/2026



Analysis	Method	Result
Chromatographic Purity	HPLC-UV/VIS	>99.80% ± 0.18%
Quantity	HPLC-UV/VIS	35.42 mg
Endotoxins	LAL	Pass - <0.05 EU/mg*

\*Pass/Fail criteria based on the USP/FDA threshold of 5 EU/kg (350 EU total for a 70 kg adult)




Report By: Dustin Newman, Laboratory Director on 5/19/2026



Approved By: Tori Johnson, Operations Manager on 5/19/2026



Please consult A2LA Certificate #6377.01.01 for a list of accredited tests. Samples were received in acceptable condition. The result(s) in this report relate only to the portion of the sample(s) tested. All analyses were performed consistent with the Vanguard Laboratory Quality Management System. Vanguard Laboratory and its staff did not observe or participate in the sample selection process, and cannot confirm the authenticity of the sample or its representativeness of the associated lot/batch.